

# eduroam

2015년 8월 17일부터 정보화본부는 글로벌무선로밍서비스(Education Roaming, 이하 "eduroam")를 개시합니다. eduroam은 해외 69개국 1,100여개의 교육기관(대학 및 연구소)이 참여하고 있는 서비스로 기관을 방문시 소속기관에서 사용하던 ID로 방문기관의 무선랜 서비스를 이용할 수 있는 서비스입니다.

eduroam서비스 이용시 **본교의 보안정책을 준수**해야 합니다.

- PC보안정책 : PC통합보안 S/W설치후 PC 취약점 점검

- 인터넷 관문 정책 : 일과(08시~19시)중 IP별 대역폭 제한 및 일부 포트 사용 제한

※ 자세한 내용은 <http://eduroam.snu.ac.kr> 참고하시기 바랍니다.

※ 타기관 계정 이용자는 해당기관에서 사용하던 방식대로 이용하시면 됩니다.

## - Table of Contents -

### **[학외]**

#### I. Auto Setup

- 1. Laptop(windows) ..... 3
- 2. Apple (MacBook(MacOS), iphone, ipad) ..... 3

#### II. Manually Setup ..... 3

### **[학내에]**

#### I. Auto Setup

#### I. Manually Setup

- 1. Laptop(Windows7) ..... 3
- 2. Laptop(Windows8 or 10) ..... 8
- 3. Android Device(Android OS) ..... 10
- 4. MacBook(MacOS) ..... 11
- 5. iPhone/iPad(iOS) ..... 12
- 6. Linux OS ..... 13

SNU Office of Information Systems and Technology launched eduroam(education roaming) on August 17th, 2015.

Eduroam (Education Roaming) is the secure worldwide federated network access service developed for the international research and education community (69 countries / around 1,100 education institutions). It provides network access without the need to gain guest credentials on arrival to an eduroam location.

## ○ Method

How SNU member use eduroam

Select “eduroam” from SSID list and enter your credentials in the following format:

**Username / Password : SNU\_ID@snu.ac.kr / Password**

Partly service can be limited according to the wireless management policies of each education institution.

※ Due to the characteristic of SNU authentication security, users need to additionally configure settings. (filling in eduroam profile)

How visitors login to eduroam at SNU

Persons from participating eduroam institutions may establish a wireless connection at SNU using their own university’ s eduroam credentials after selecting eduroam from SSID list.

## ○ Security Policies

Users have to observe security policies of SNU during using eduroam at SNU.

- PC Securities : Internet connection is only available for users who installed PC Integrated Security S/W after accessing Wireless network. (Users are recommended to inspect PC vulnerability.)

- Internet Policies: Internet bandwidth per IP address is limited (15Mbps) and some of ports are blocked from 8:00 ~ 19:00.

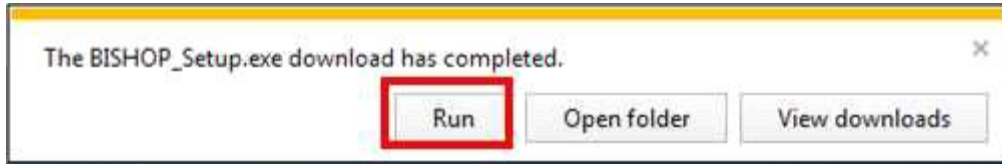
※ <http://eduroam.snu.ac.kr>

※ Inquiry : IT Emergency Call 880-8282(Korean), 880-2121(English)

# (학외)

## I. Auto Setup

1. Laptop(windows) -- 첨부파일 BISHOP\_Setup.exe 실행합니다.



1-4번부터 따라서 실행합니다.

2. Apple (MacBook(MacOS), iphone, ipad)

-- 첨부파일 중 eduroam.mobileconfig 실행(더블클릭) 후 12쪽~13쪽을 따라서 실행합니다.  
또는 <http://eduroam.snu.ac.kr> 에서 eduroam.mobileconfig 클릭하여 다운받아 실행합니다.

## II. Manually Setup

1. Laptop(Windows) 첨부파일 중 OS에 맞춰

BISOP\_SE\_32\_plugin.exe or BISOP\_SE\_64\_plugin.exe 실행 후 5쪽(1-4부터) 또는 11쪽(2-3부터 따라서 실행합니다.

# (학내) I-1. Windows 7 Manually Set up

1-1. Click an wireless network icon on the taskbar.

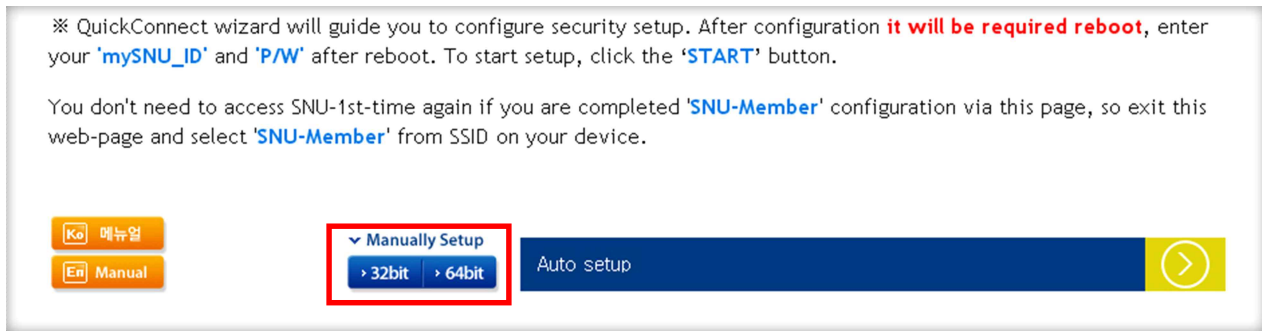
The list is split by the type of available network connections. Click 'SNU-1st-time'.



1-2. Open any web browser and click 'SNU MEMBER'. (교직원/학생WiFi)

1-3. Guidance for laptop setting is below. Click 32bit or 64bit.

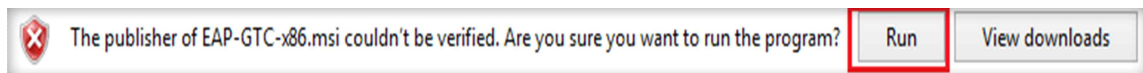
(※ 32bit : BISHOP\_SE\_32\_Plugin.exe, 64bit : BISHOP\_SE\_64\_Plugin.exe)



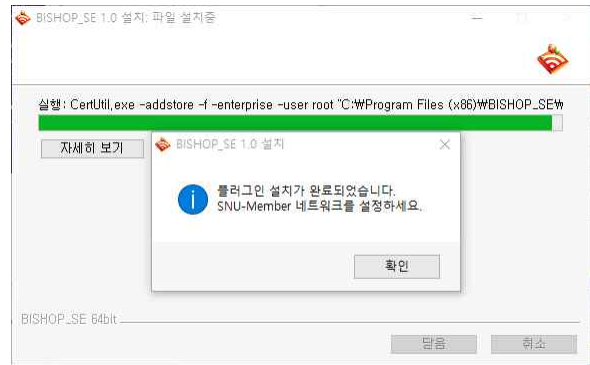
Click "Run".



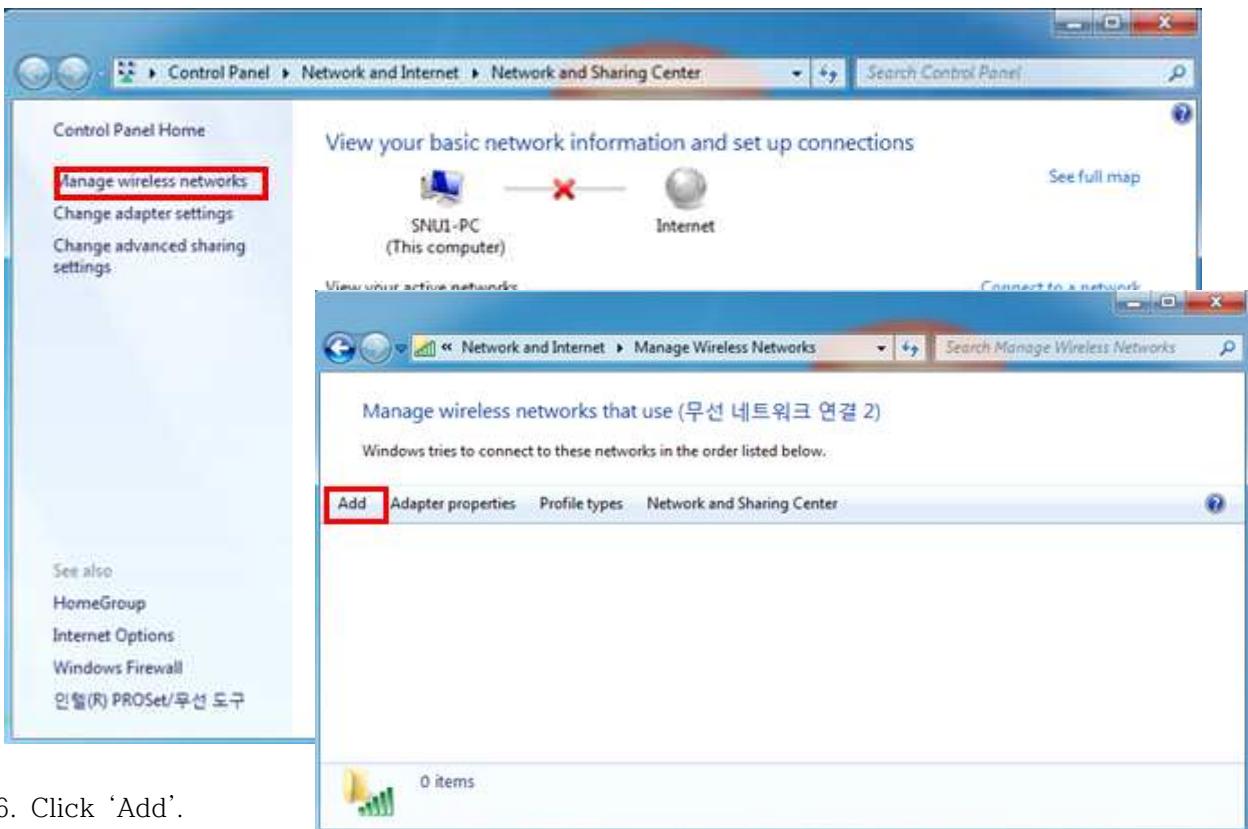
Click "Run".



1-4. Click 'Run' or 'Save'. After downloading open that file.  
 Check '동의함' and click 'OK'.  
 Configuration for laptop will be processed.

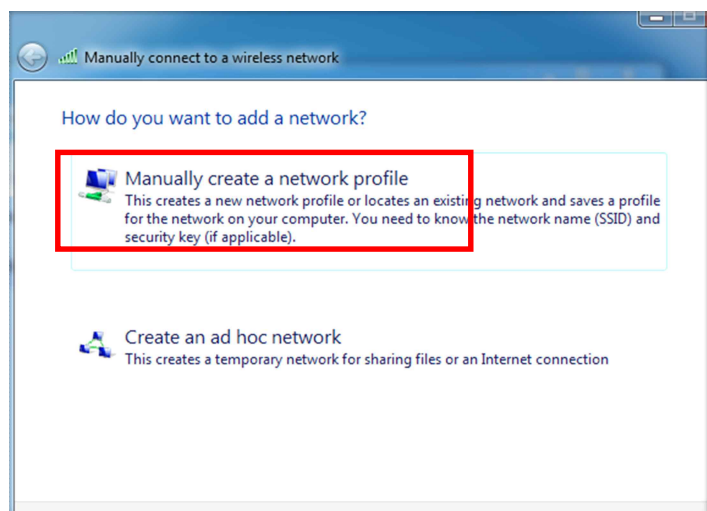


1-5. Control Panel → Network and sharing center → Set up a new connection or network



1-6. Click 'Add'.

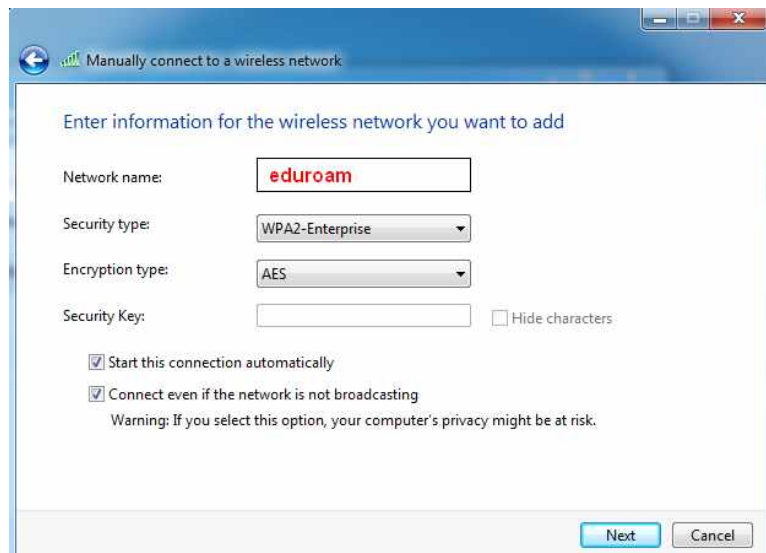
1-7. Click 'Manually create a network profile'.



1-8. Enter

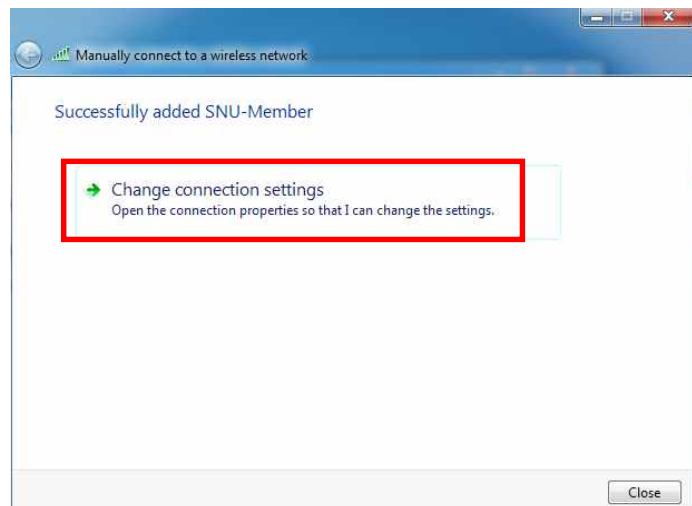
- Network name : **eduroam**
- Security type : WPA2-Enterprise
- Encryption type : AES

check(✓) 'Connect even if the network is not broadcasting'



1-9. click

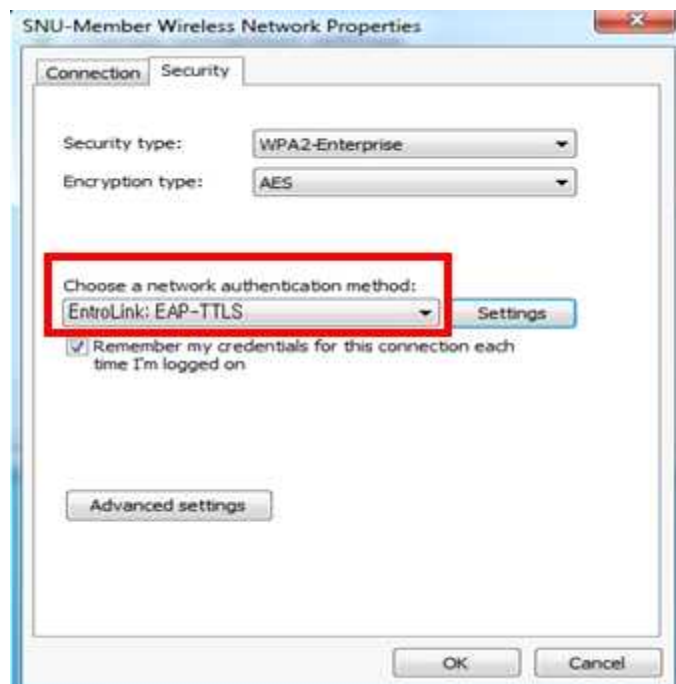
'Change connection settings'



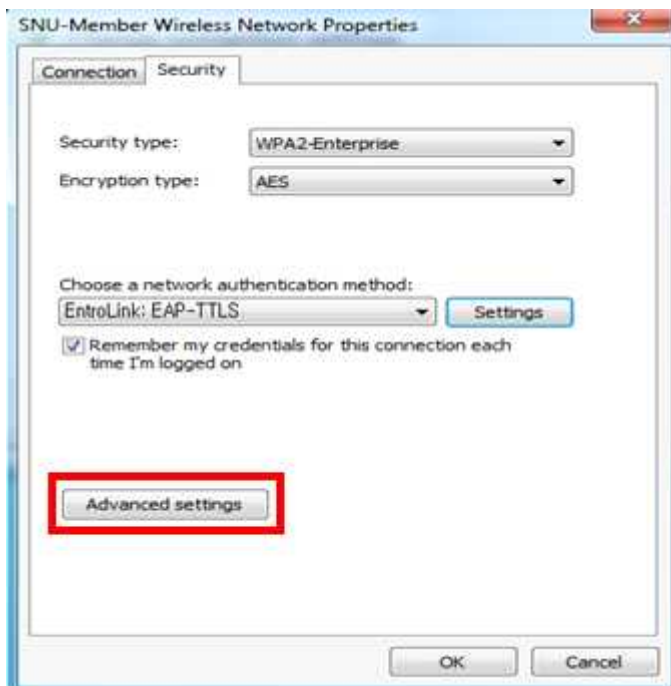
1-10. Click 'Security'.

Choose a network authentication method : select 'Microsoft:Protected EAP'

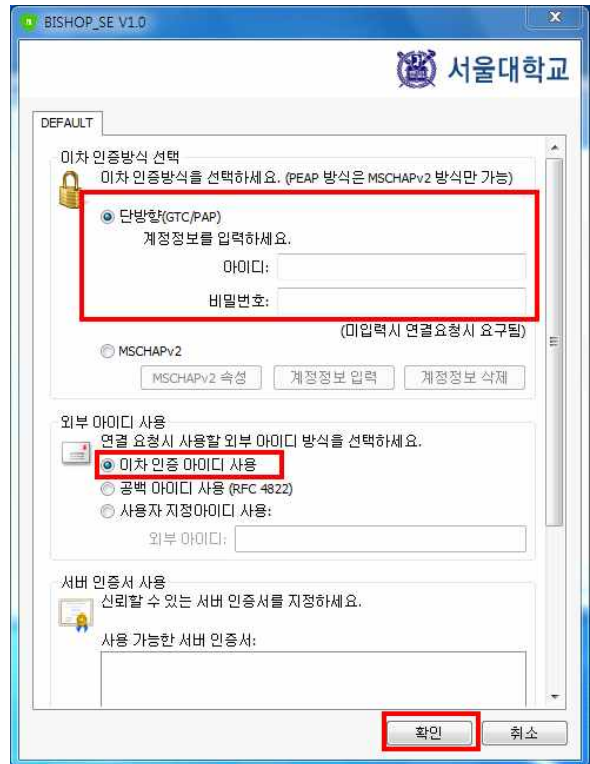
click 'Settings'



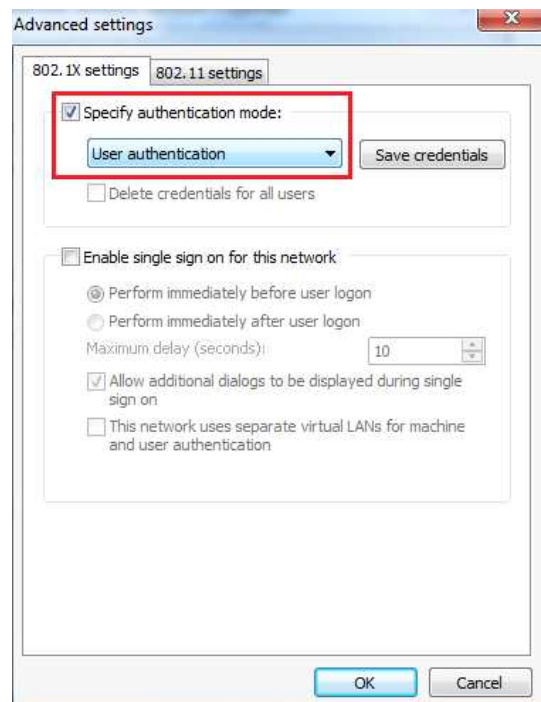
1-11. 이차인증방식 선택: '단방향(GTC/PAP)'  
 (select Second Authentication Method)  
 enter your SNU ID and password.



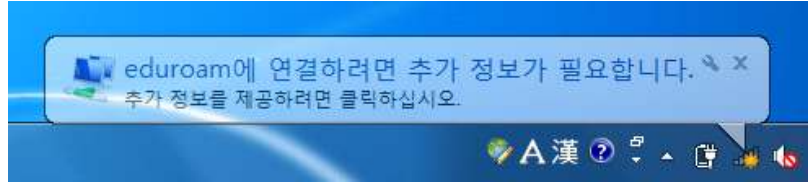
1-13. Check(√) 'Specify authentication mode'.  
 Select 'User authentication'.  
 Click 'OK'.



1-12. Click 'Advanced settings'.



1-14. Click 'If additional information is needed to connect 'eduroam'.



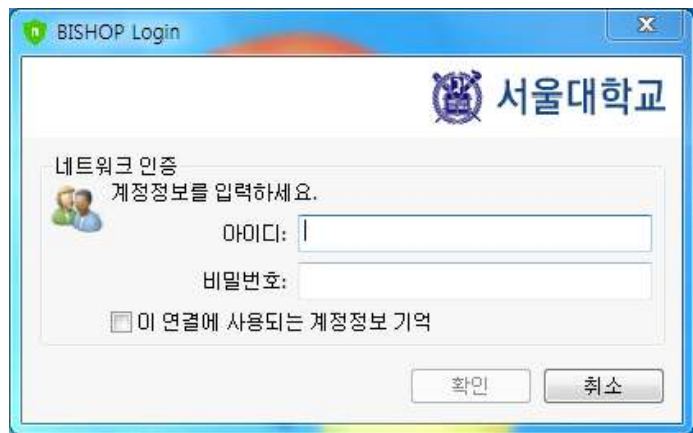
(or Click an wireless network icon on the taskbar. Click 'eduroam' .

1-17. Enter

-User name : **SNU\_ID@snu.ac.kr**

-Password : password

Click 'OK'.



1-18. The configuration is complete.



## (학내) I-2. Windows 8 or 10 Manually Set up

2-1. The list is split by the type of available network connections. Click 'SNU-1st-time'.

2-2. Open any web browser and click 'SNU MEMBER'. (교직원/학생WiFi)



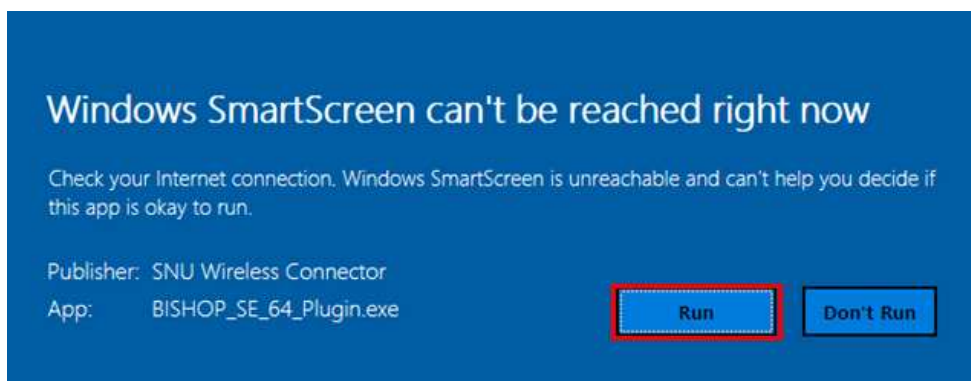
2-3. Guidance for laptop setting is below. Click 32bit or 64bit.

(※ 32bit : BISHOP\_SE\_32\_Plugin.exe, 64bit : BISHOP\_SE\_64\_Plugin.exe)

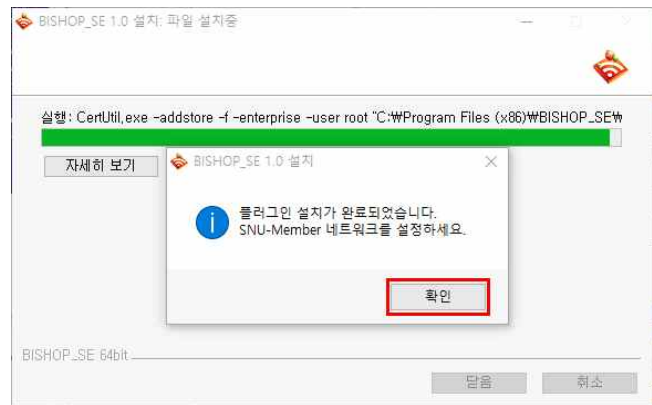
※ QuickConnect wizard will guide you to configure security setup. After configuration **it will be required reboot**, enter your 'mySNU\_ID' and 'P/W' after reboot. To start setup, click the 'START' button.

You don't need to access SNU-1st-time again if you are completed 'SNU-Member' configuration via this page, so exit this web-page and select 'SNU-Member' from SSID on your device.

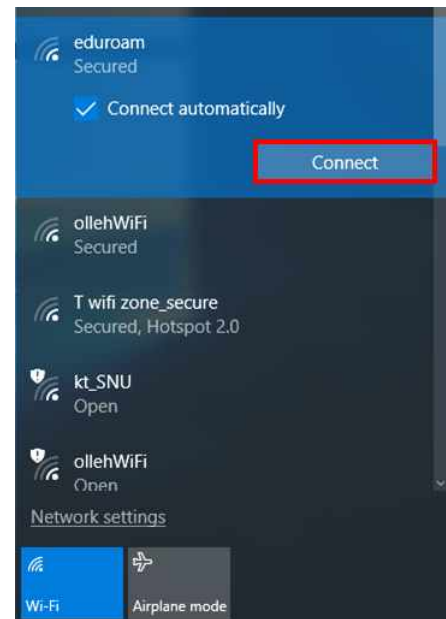
Click “실행(Run)” → “실행(Run)” → “실행(Run)”



2-4. Click “확인(OK)”.



2-5. Click an wireless network icon on the taskbar. ⇒  
Click ‘eduroam’ .



2-6. Enter  
-User name : SNU\_ID@snu.ac.kr  
-Password : password  
  
(Don't enter Logon domain.)  
Click ‘OK’.



2-7. The configuration is complete.

## I-3. Android Device (Android)

3-1.Settings → Turn on WiFi  
→ Select “eduroam” from SSID.

. Configuration

- EAP method : PEAP
- **Phase 2 authentication : GTC**
- Identity : **SNU\_ID@snu.ac.kr**
- Password : SNU password

Click ‘Connect’.

SNU-WiFi

EAP 방식  
PEAP

2단계 인증  
GTC

CA 인증서  
(설정 안 함)

사용자 인증서  
(설정 안 함)

ID  
SNU\_ID@snu.ac.kr

익명 ID

비밀번호  
.....

비밀번호 표시

고급 옵션 표시

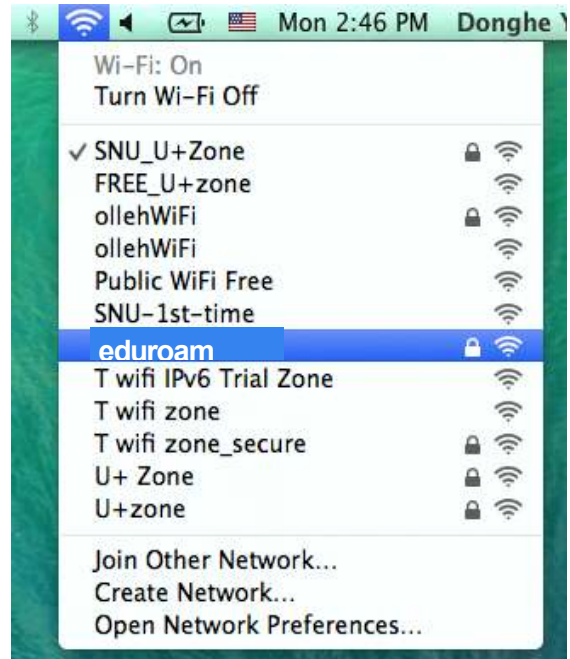
취소      연결

The configuration is complete.

Open any web browser and access the Internet.

## I-4. MacBook (MacOS)

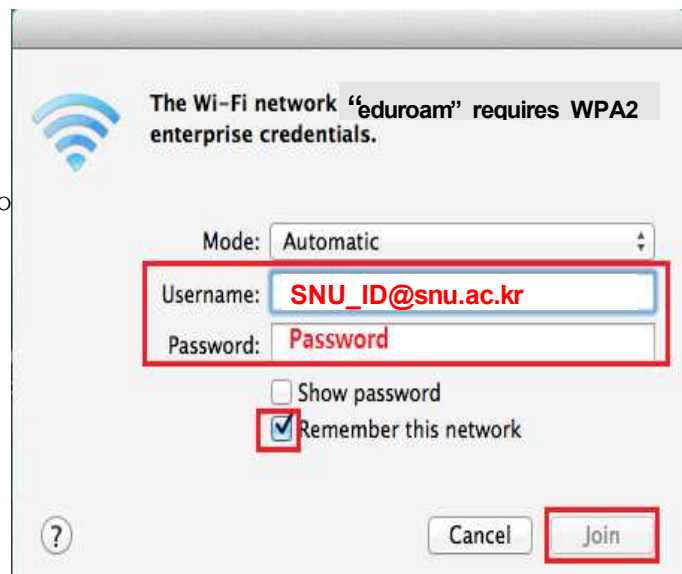
1. Click the WiFi icon in the upper-right corner and click 'Wi-Fi: On'.
2. Click 'eduroam' from SSID.



3. Username: **SNU\_ID@snu.ac.kr**  
Password: SNU password  
(If you Click the check box for 'Remember this Network', you don't have to enter ID and password next time.)

Click 'Join'.

The configuration is complete.

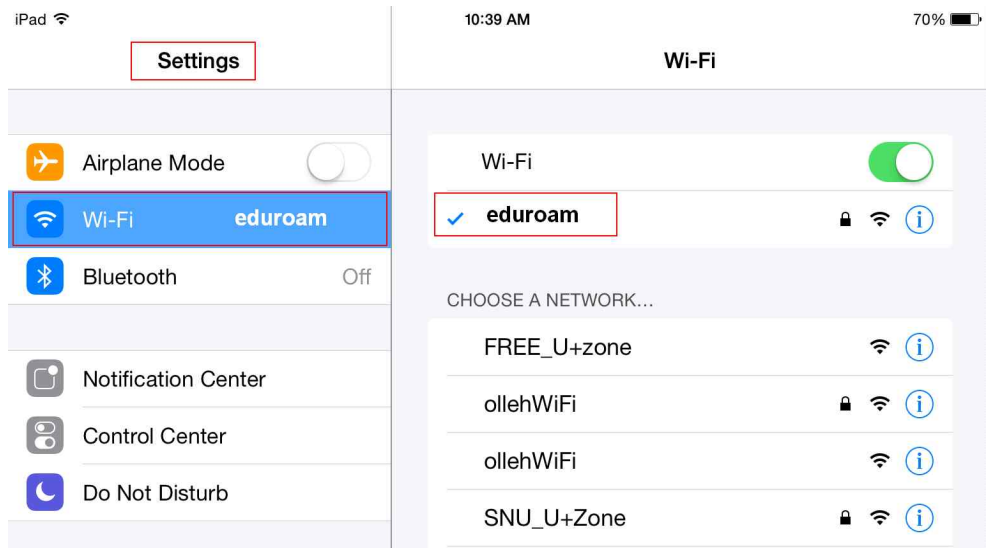


4. Open any web browser(Safari, Chrome, Internet explorer, Firefox).



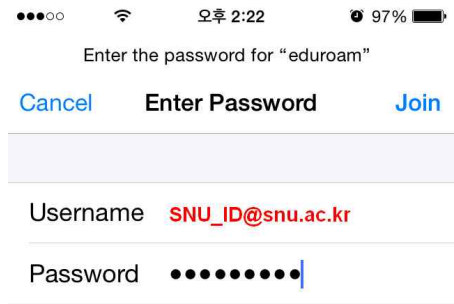
# I-5. iPhone/iPad (iOS)

- 1. Settings →  
Turn on WiFi →  
select “**eduroam**”  
from SSID

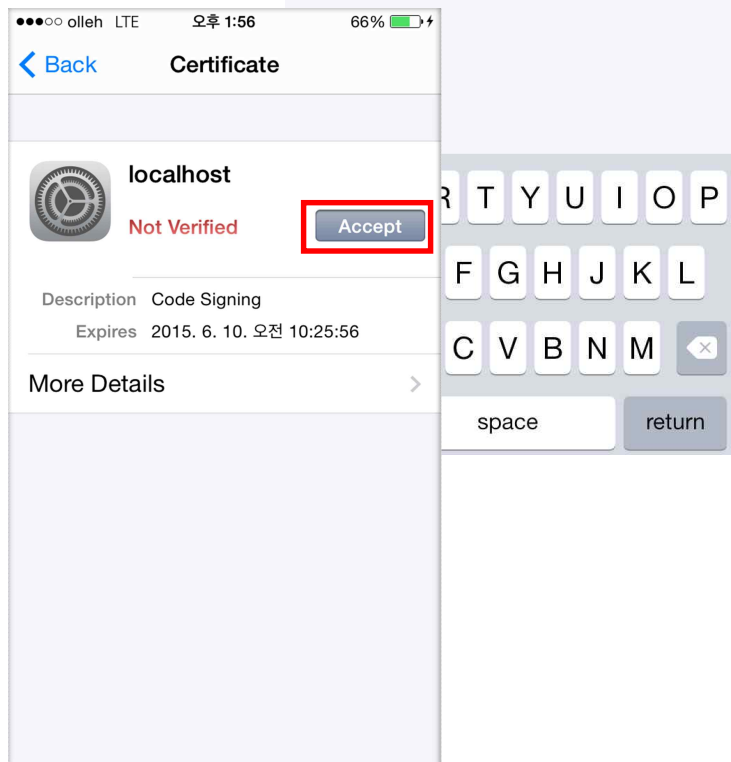


- 2. Enter username & password
  - **Username** : SNU\_ID@snu.ac.kr
  - Password : SNU Password

Click “Join” .



Click ‘Accept’.



The configuration is complete.

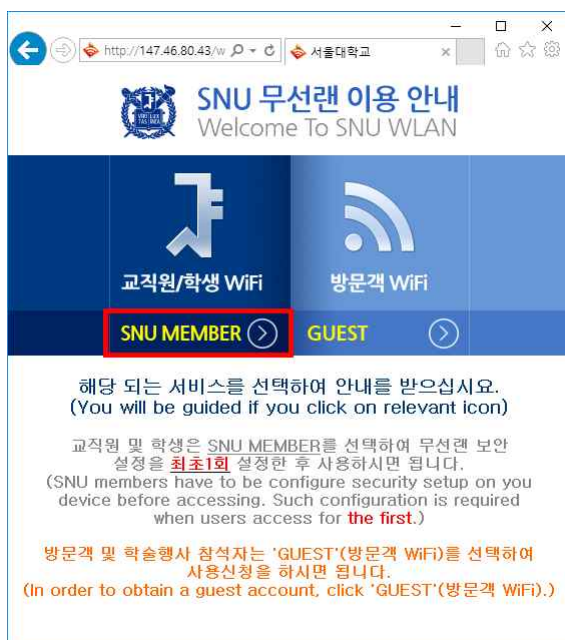
Open any web browser.

# I-6. Linux OS

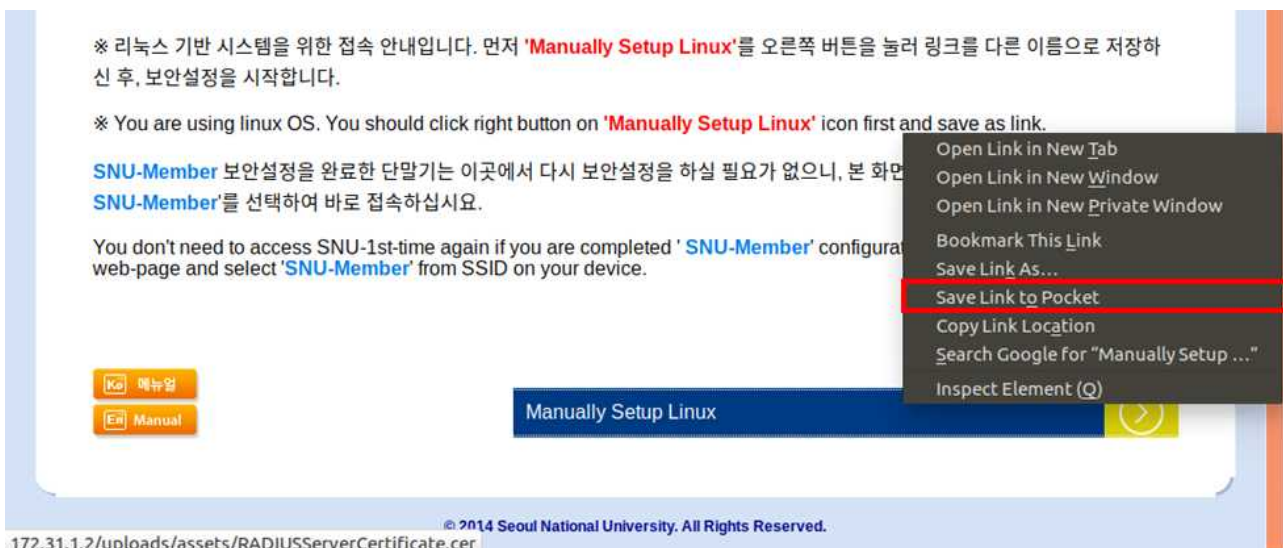
1. Click WiFi icon on the taskbar.  
Select 'SNU-1st-time' from SSID and click "Connect".



2. Open the browser and click '교직원/학생 WiFi'.



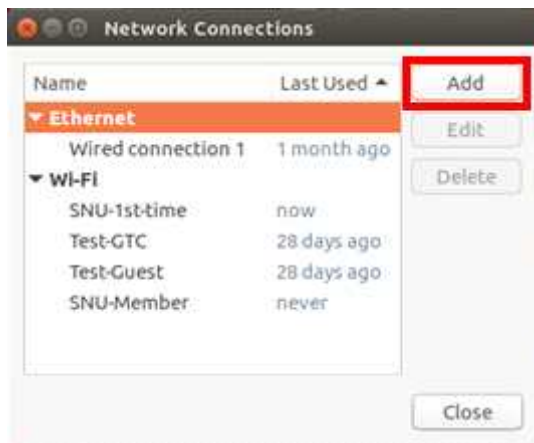
3. Click 'Manually setup Linux'. "Right-Click" your mouse to save as.



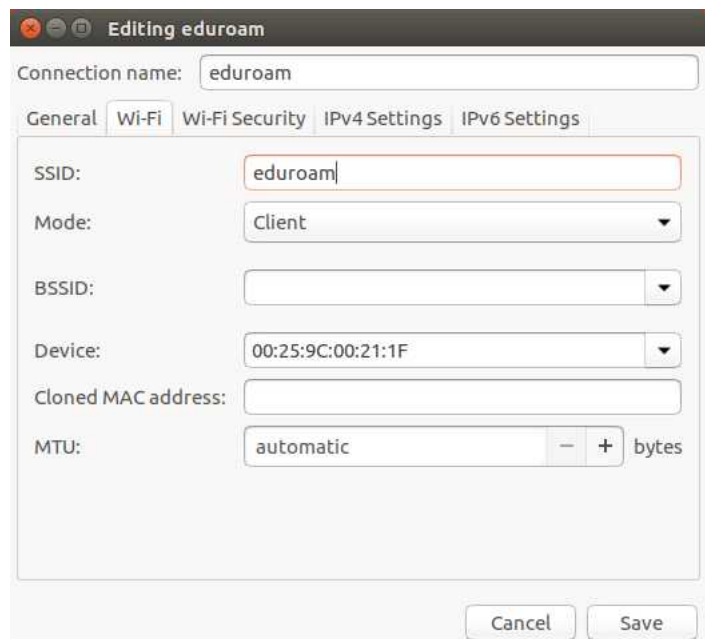
4. From the panel, right-click the 'NetworkManager' icon. Click "Edit Connections ...".



5. Click "Add".



6. If popup



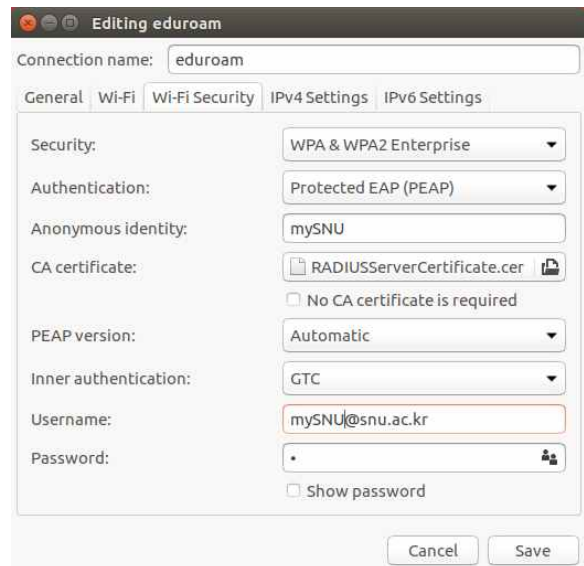
7. Connection Name : eduroam'.

Under "Wireless" tab,

- SSID : eduroam
- Mode : Client

Click "Apply".

7. Under “Wireless Security” tab,
  - Security : WPA & WPA2 Enterprise
  - Authentication : Protected EAP(PEAP)
  - Anonymous identity : SNU-ID
  - CA Certificate
    - : Select the file which you downloaded in #4-3.
    - (※ FileName: RADIUSServerCertificate.crt)
  - Inner Authentication : GTC
  - User Name : SNU-ID@snu.ac.kr
  - Password : SNU password



Click “Apply”.

8. From the panel, click the "NetworkManager" icon.  
And select 'SNU-Member' from SSID.



9. “SNU-Member” connection is established.



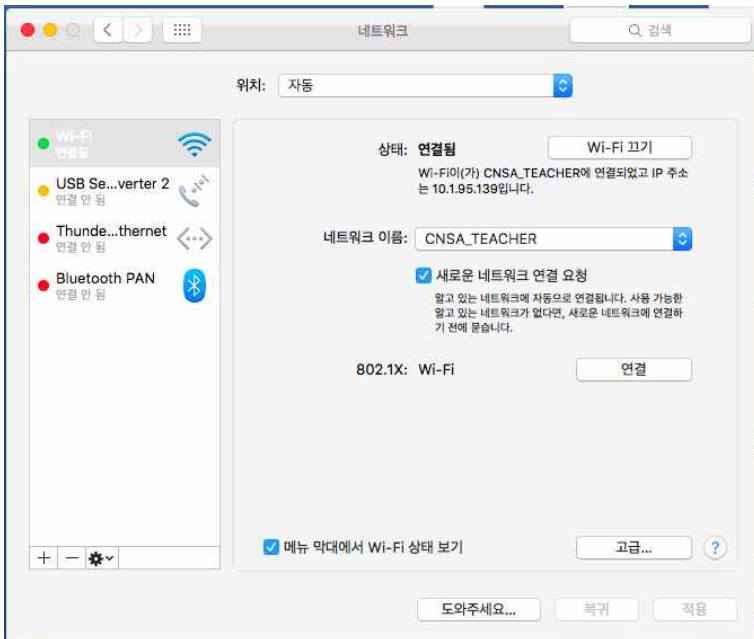
## III-2. Apple 계열 WiFi 접속이 안될 때 – MacOS(OS X)

### [프로파일 삭제]

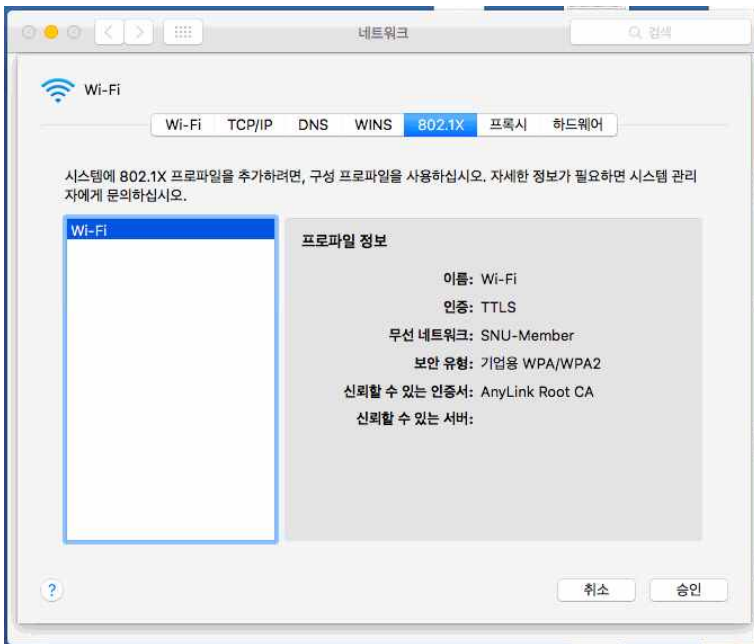
1. '시스템 환경설정'에서 '네트워크'를 누릅니다.



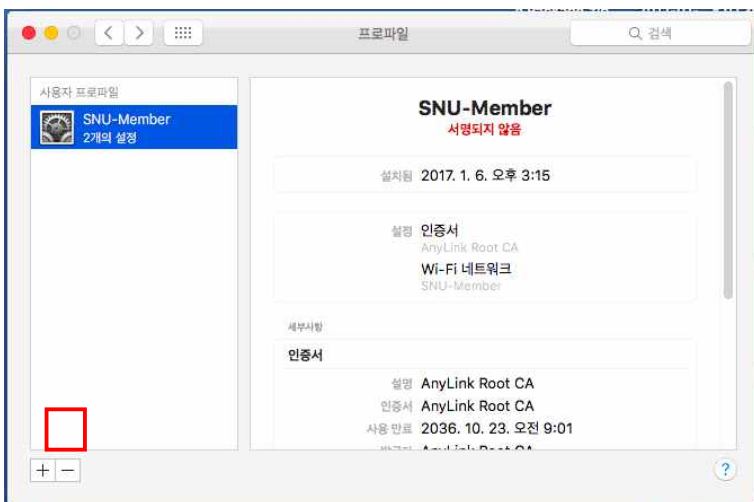
2. Wi-Fi에서 '고급'을 누릅니다.



3. '802.1x'탭을 클릭합니다.



4. eduroam 프로파일이 있으면 '-'을 눌러 프로파일을 삭제합니다.



[프로파일 생성]

5. 교직원/학생 WiFi (SNU MEMBER)를 클릭



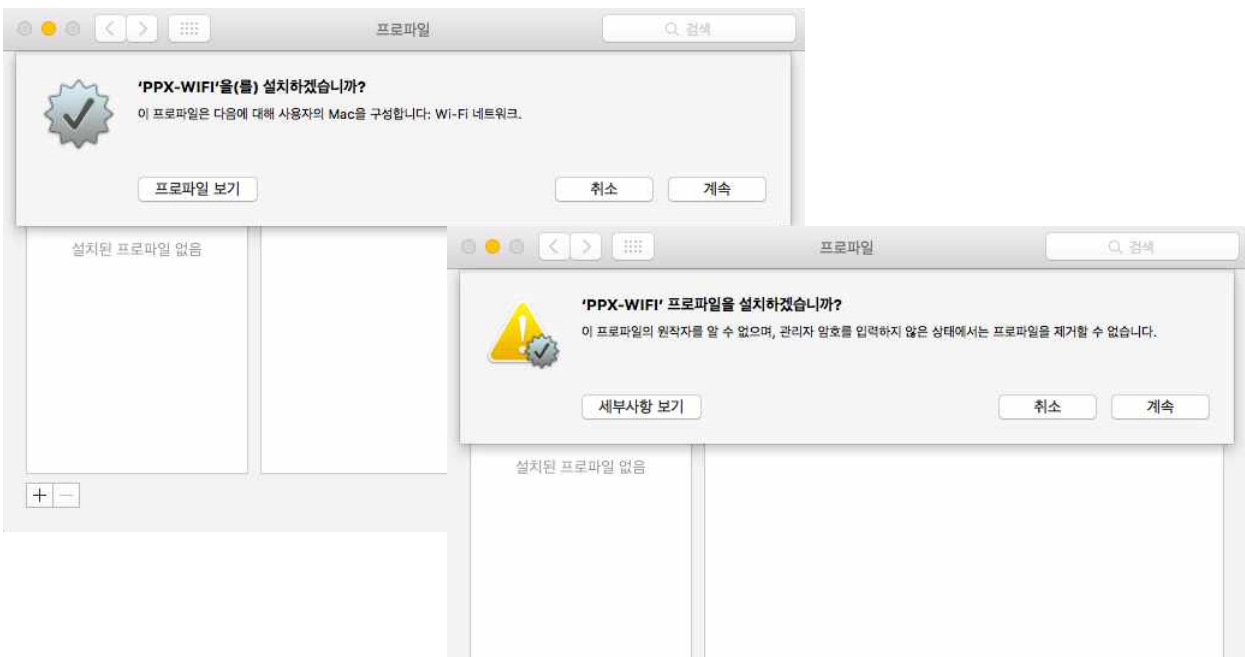
6. Apple 계열 안내페이지입니다.  
프로파일 설치를 위해 “OS X”를 클릭합니다.



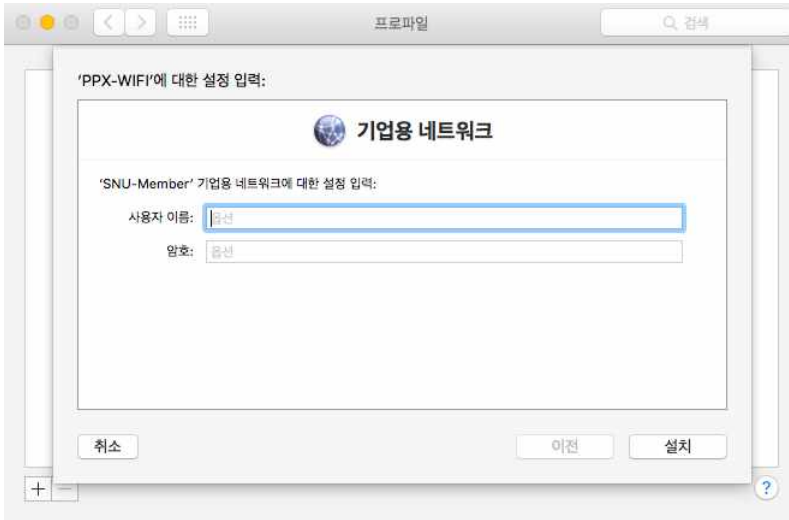
7. 다운로드 받은 eduroam.mobileconfig를 실행합니다.

(또는 메일의 첨부파일 중 해당 파일을 실행합니다.)

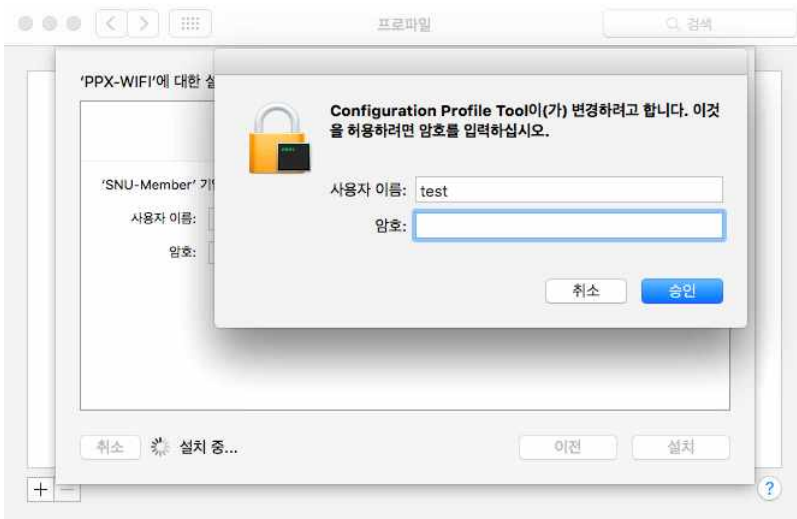
[계속] → [계속]을 누릅니다.



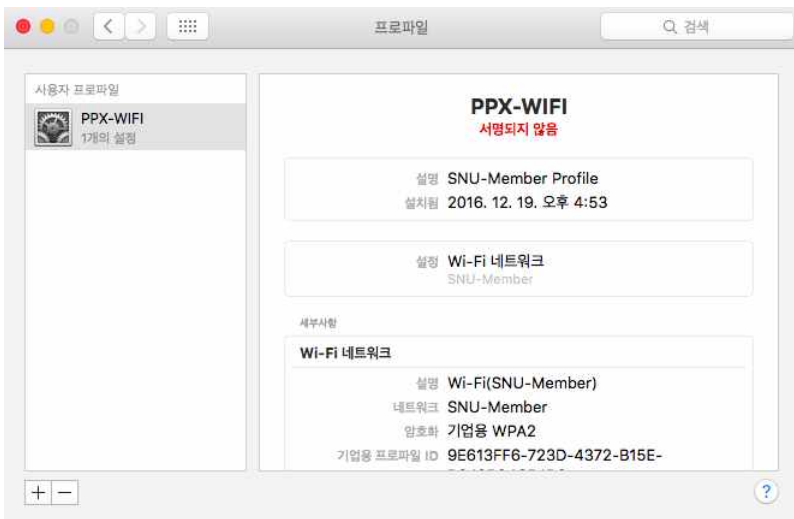
8. [SNU\\_ID@snu.ac.kr](mailto:SNU_ID@snu.ac.kr) 와 비밀번호를 입력하고 [설치]를 누릅니다.



9. 설정 변경을 위해 시스템 사용자 암호를 입력합니다.



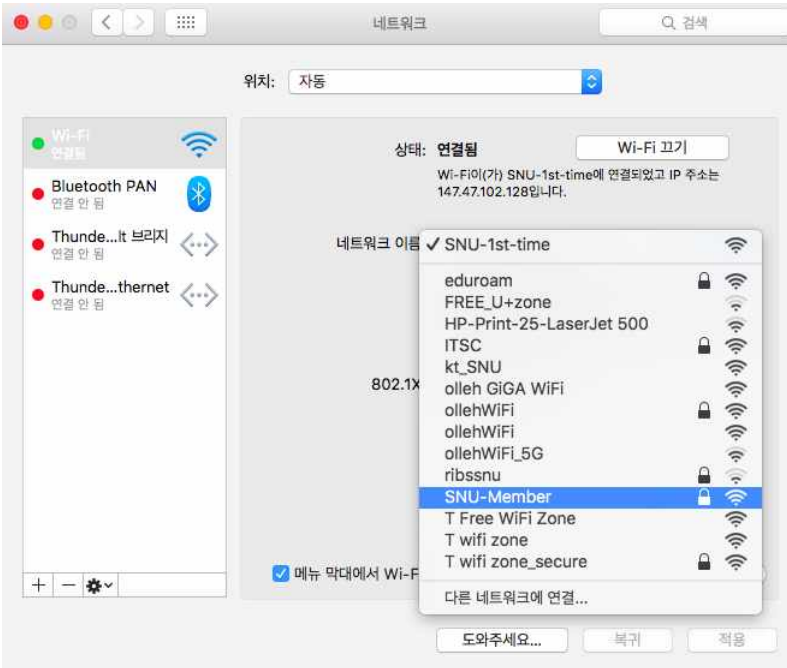
10. 설치가 완료되었으며 창 상단의 [<]를 누릅니다.



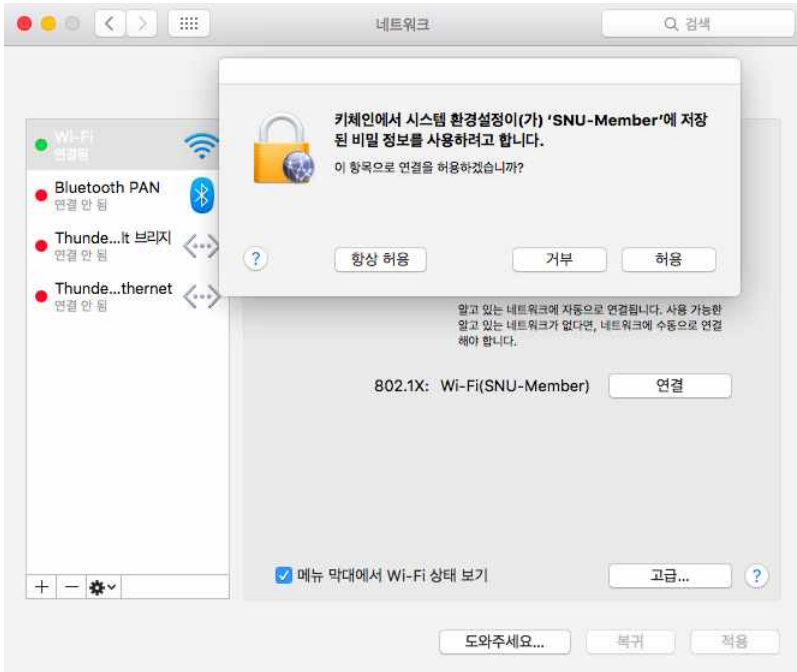
11. '시스템 환경설정'에서 '네트워크'를 누릅니다.



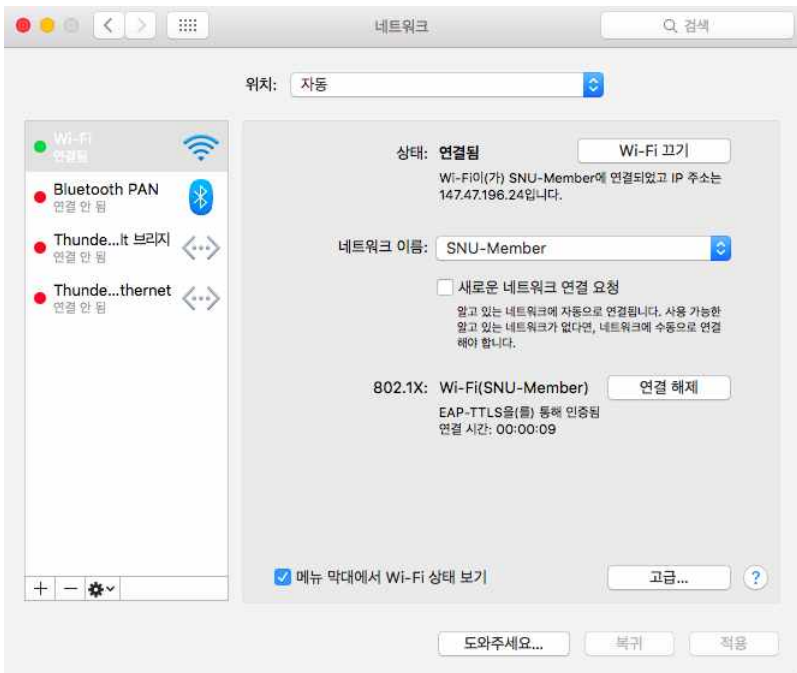
12. Wi-Fi 선택된 상태에서 네트워크 이름 "eduroam"를 누릅니다.



13. 키체인(인증서) 경고에서 [허용]을 누릅니다.(eduroam에 저장된 비밀정보를 사용하려고 합니다.)



14. “상태: 연결됨” 표시로 연결되었음을 확인할 수 있습니다.(네트워크 이름 : eduroam)



15. 설정 및 연결이 완료되었습니다.

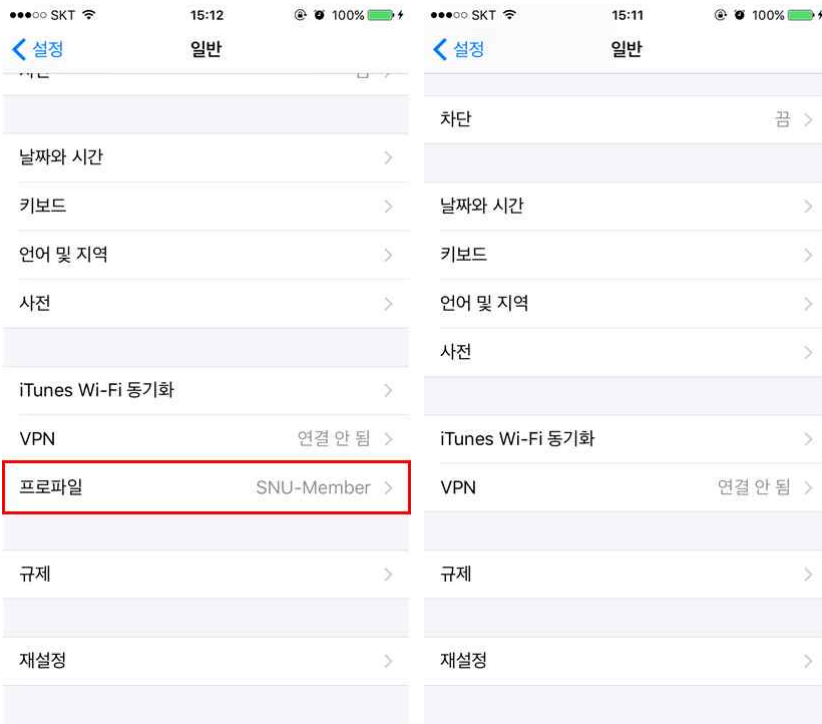
## Ⅲ-2. Apple 계열 WiFi 접속이 안될 때 – iPhone

### [프로파일 삭제]

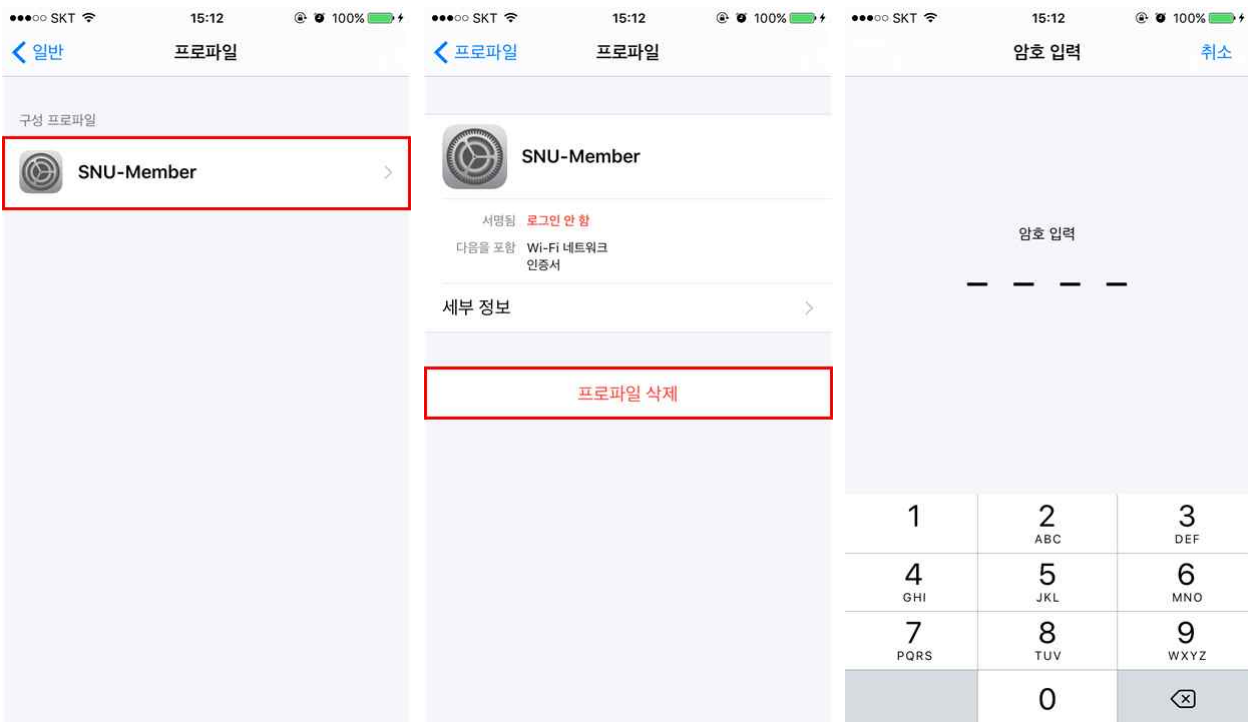
2-2-1. 일반 > 프로파일을 클릭합니다. (프로파일명: eduroam)

※설치된 프로파일이 없으면 오른쪽 그림처럼 프로파일이 보이지 않습니다.

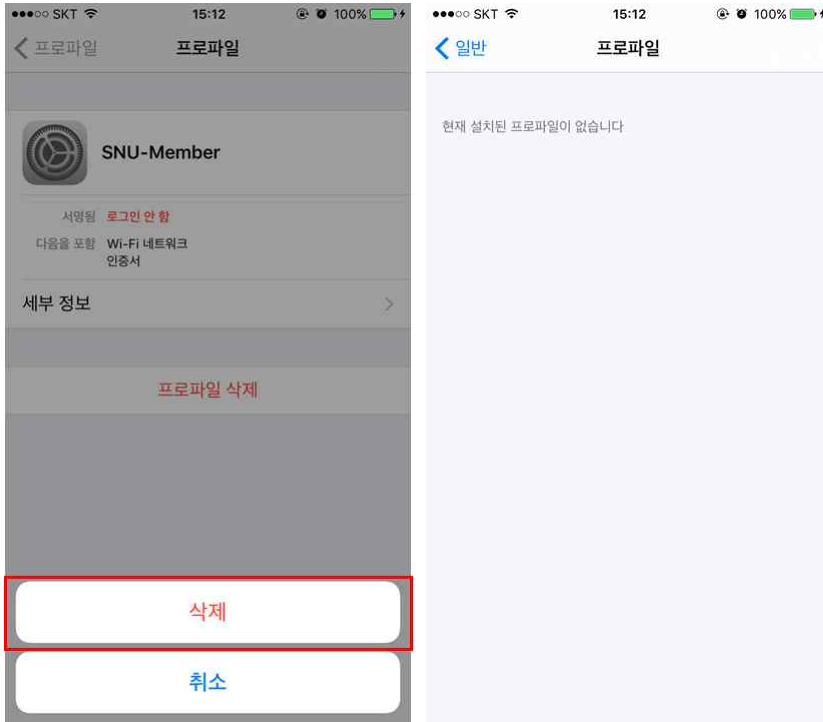
[프로파일 설치]를 진행해주세요.



2-2-2. eduroam 를 클릭한 후, 프로파일 삭제를 누릅니다. 단말 비밀번호를 입력합니다.



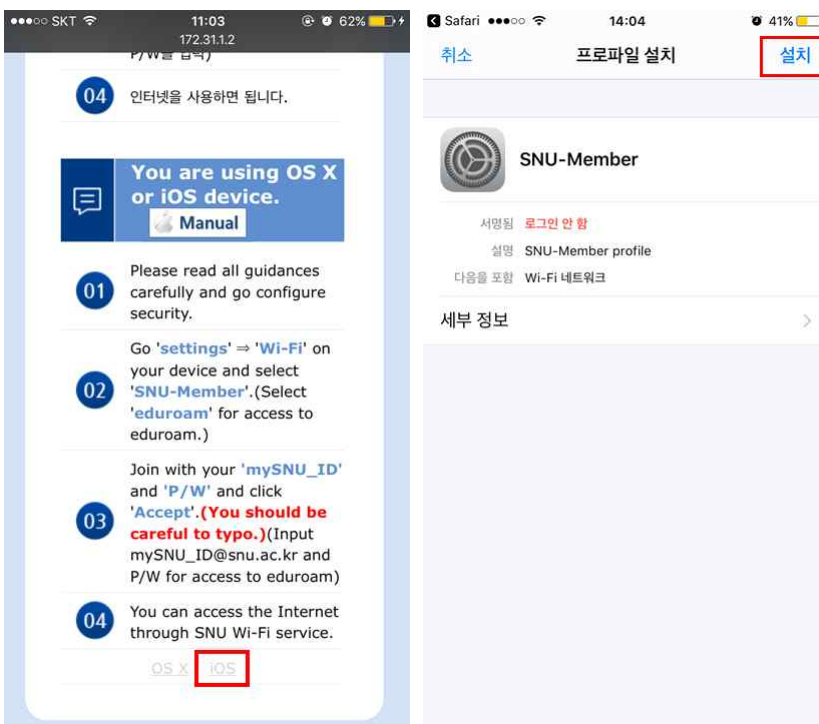
2-2-3. [삭제]를 눌러 프로파일을 삭제합니다.



### [프로파일 생성]

2-2-4. 교직원/학생 WiFi (SNU MEMBER)를 클릭, 프로파일 설치를 위해 “iOS”를 클릭합니다.

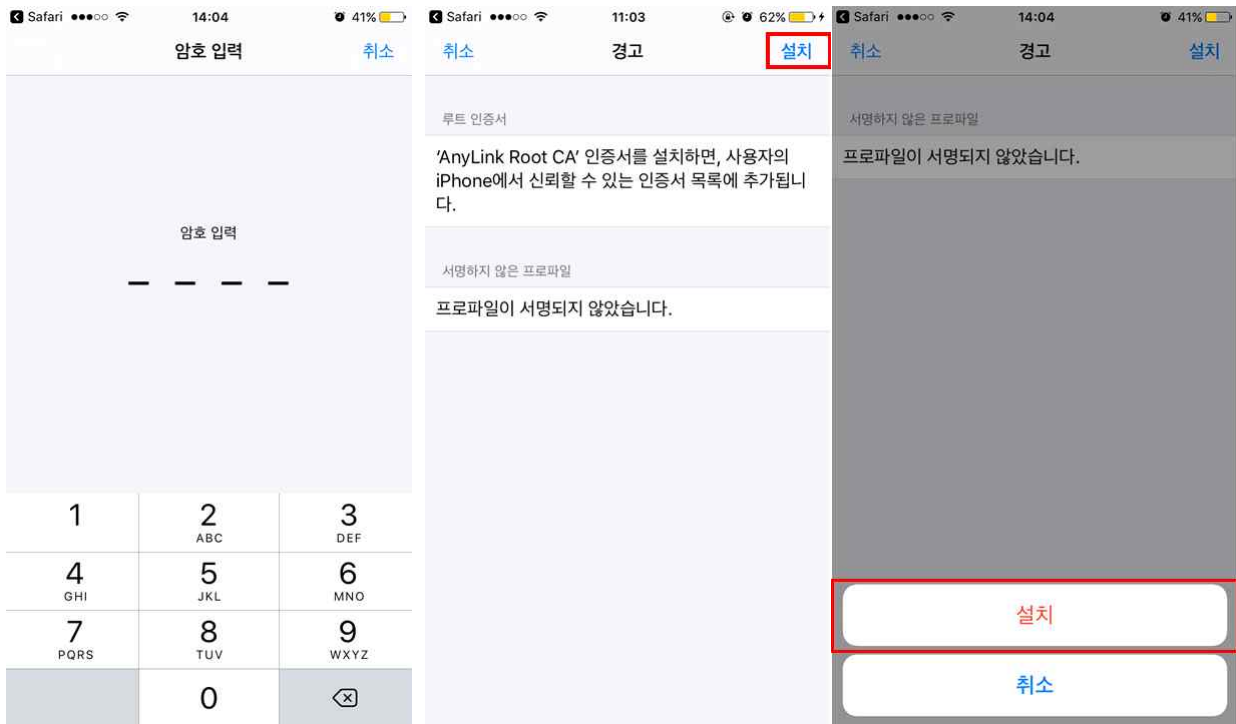
2-2-5. 다운로드 받은 eduroam\_mobileconfig를 실행합니다. [설치]를 클릭합니다.



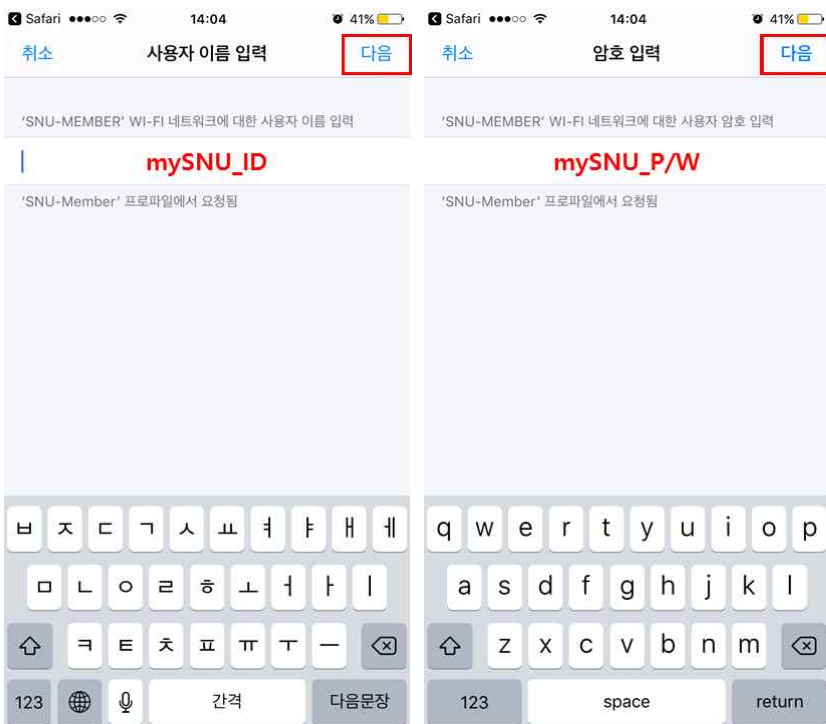


2-2-6. 단말 비밀번호를 입력합니다.

[설치] → [설치]를 클릭합니다.

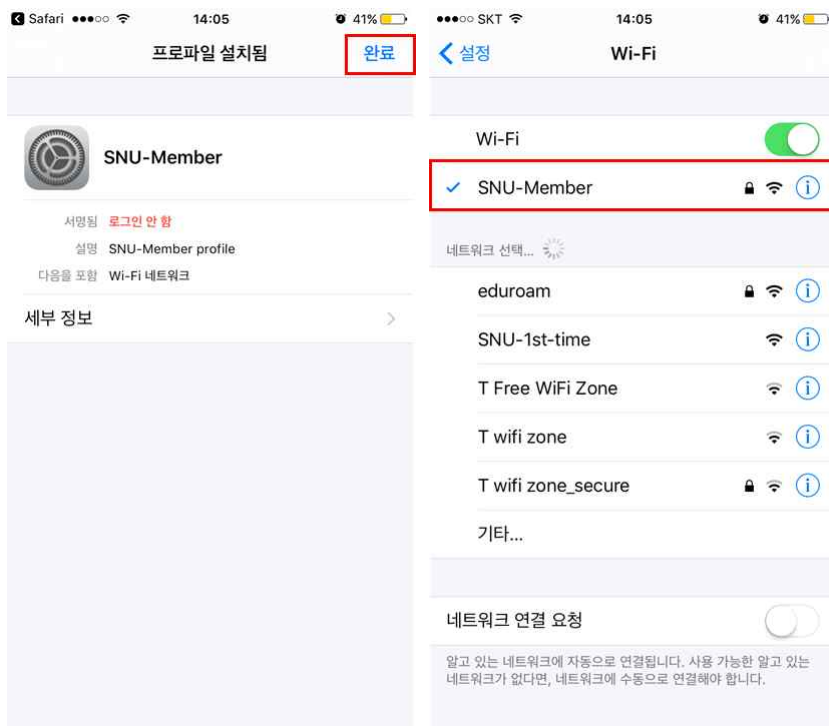


2-2-7. mySNU\_ID입력 후 [다음] 클릭, 비밀번호를 입력 후 [다음]을 누릅니다.



2-2-8. [완료]를 눌러 설정을 완료합니다.

2-2-9. Wi-Fi 설정에서 네트워크 이름 “SNU-Member”를 누릅니다.



2-2-10. 설정 및 연결이 완료되었습니다.